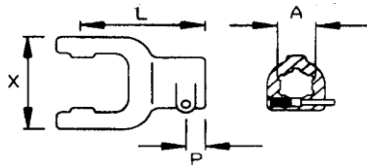



### Quick Disconnect Yoke with Q.D. Pin



Shaft Size		A	X	P	L	Part No.
2100	22 X 54.8	1-1/8"-6 1-3/8"-6 1-3/8"-21	65	16	92	8-010111 8-010110 8-010112
2200	23.8 X 61.3	1-1/8"-6 1-3/8"-6 1-3/8"-21	71	18	97	8-010211 8-010210 8-010212
WI	27 X 70	1-1/8"-6 1-3/8"-6 1-3/8"-21	80	18	102	8-10311 8-10310 8-10312
2300	27 X 74.6	1-1/8"-6 1-3/8"-6 1-3/8"-21	85	18	109	8-010411 8-010410 8-010412
2400	32 X 76	1-3/8"-6 1-3/8"-21 1-3/4"-6 1-3/4"-20	89	20	112	8-010510 8-010512 8-010513 8-010517
WII	34 X 90	1-3/8"-6 1-3/8"-21 1-3/4"-6 1-3/4"-20	89	20	112	8-015610 8-015612 8-015613 8-015617
W220	30.2 X 92	1-3/8"-6 1-3/8"-21 1-3/4"-6 1-3/4"-20	106	20	122	8-10610 8-10612 8-10613 8-10617
2500	36 X 89	1-3/8"-6 1-3/8"-21 1-3/4"-6 1-3/4"-20	106	20	122	8-016710 8-016712 8-016713 8-016717
L 8V T 8V	35 X 106.5	1-3/8"-6 1-3/8"-21 1-3/4"-6 1-3/4"-20	117	20	125	8-10810 8-10812 8-10813 8-10817
2600	42 X 104	1-3/8"-6 1-3/8"-21 1-3/4"-6 1-3/4"-20	121	20	126	8-010910 8-010912 8-010913 8-010917