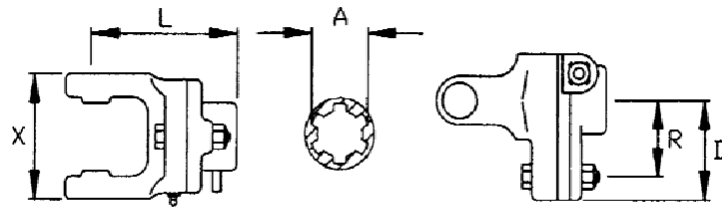



Shear Bolt Clutch with Quick Disconnect Pin



Shaft Size		D	X	L	A	R	P	Torque	Part No.
2200	23.8 X 61.3	68	71	106	1-3/8"-6	42	M6	780	8-BTL02384206A
							M8	1,400	8-BTL02384208A
2300	27 X 74.6	68	86	117	1-3/8"-6	48	M8	1,600	8-BTL04384808A
						52	M8	1,730	8-BTL04385208A
2400	32 X 76	68	90	131	1-3/8"-6	56	M8	1,860	8-BTL04385608A
						64	M8	2,130	8-BTL05386408A
2400	32 X 76	80	90	131	1-3/8"-6	48	M8	1,600	8-BTL05384808A
						56	M10	2,500	8-BTL05384810A
2400	32 X 76	80	90	131	1-3/8"-6	56	M8	1,860	8-BTL05385608A
						64	M10	2,920	8-BTL05385610A
2400	32 X 76	80	90	131	1-3/8"-21	56	M10	2,920	8-BTL05215610A
						48	M10	2,500	8-BTL05344810A
2500	36 X 89	80	105	141	1-3/8"-6	48	M10	2,500	8-BTL67384810A
						56	M10	2,920	8-BTL67385610A
2500	36 X 89	80	105	141	1-3/8"-6	64	M8	2,130	8-BTL67386408A
						48	M10	2,500	8-BTL67214810A
2500	36 X 89	80	105	141	1-3/8"-21	48	M10	2,500	8-BTL67214810A
						56	M10	2,920	8-BTL67345610A
2500	36 X 89	80	105	141	1-3/4"-6	64	M10	3,330	8-BTL67346410A
						64	M10	3,330	8-BTL67346410A
2600	42 X 104	80	124	145	1-3/8"-6	56	M12	4,200	8-BTT09385612A
						56	M12	4,200	8-BTT09215612A
						64	M12	4,800	8-BTT09346412A
						64	M12	4,800	8-BTT09206412A